

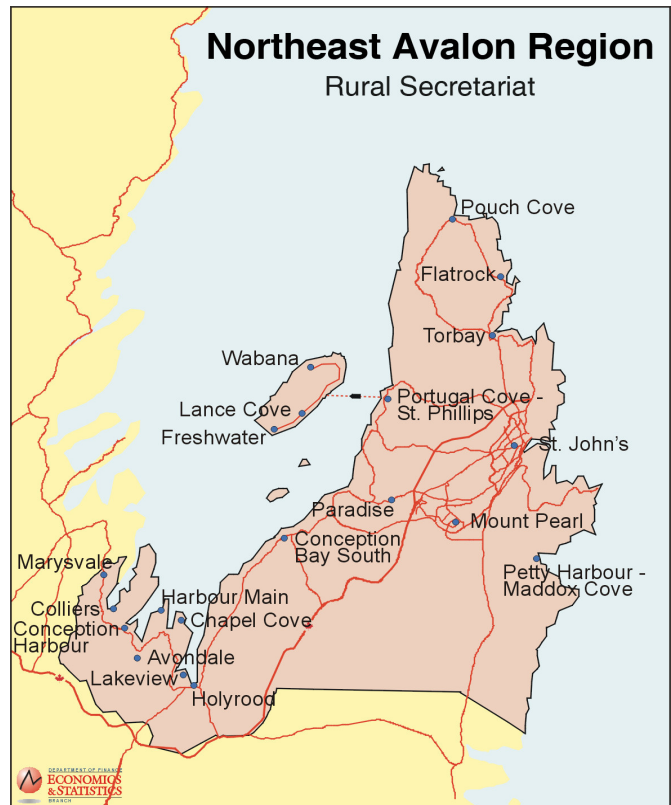
## STEERING COMMITTEE RELEASES SIGNIFICANT REPORTS

The Northeast Avalon Region of the Rural Secretariat (formerly Strategic Social Plan) recently released two key profiles: **Early Childhood Development in the Northeast Avalon Region** and **Poverty Profile of the Northeast Avalon Region**.

“We are very pleased to be able to provide detailed information on our region, right down to the neighbourhood level. These reports enable us to work with community partners to address priorities in our communities,” says Gail Gosse, Committee Chair. “We strongly believe that knowledge is power, and by better understanding our region we can better address the issues collectively.”

The committee recognizes the importance of prevention and early intervention. For example, research consistently shows that small investments made during the early childhood years result in long-term significant benefits for the overall community.

For more information, contact the Regional Planner at 722-9845, [gjanas@ssp.nf.net](mailto:gjanas@ssp.nf.net), or visit our website: <http://www.gov.nl.ca/rural/>



### **Points of Interest:**

- Key reports available at <http://www.gov.nl.ca/rural/>
- Wealth of regional data available at [www.communityaccounts.ca](http://www.communityaccounts.ca)
- Free training in Community Accounts
- New members from the voluntary community-based sector

## NEW COMMUNITY REPRESENTATIVES

Two new representatives from the voluntary community-based sector recently joined the Steering Committee: **Amy Percy of the Community Centre Alliance** and **Bride Power of Marysvale Heritage**. “Working with community partners is a priority for us, and we are very pleased with the level of interest from community groups in being involved with us”, says Gail Gosse, Committee Chair. “Through terms of two to three years we are able to offer opportunities to more groups for direct involvement at our table.”

Amy is the Community Economic Development Coordinator for five St. John's community centres. She has a great deal of experience in the voluntary and private sectors through her involvement with such agencies as Choices for Youth and her entrepreneurial pursuits. Bride is the Coordinator of the Turk's Gut Heritage House in Marysvale and is also a Member at Large for the Local Services Committee. In addition to organizing local development initiatives, Bride liaises regularly with the municipalities in Conception Bay.



Gail Gosse, Chair of the Northeast Avalon Region Steering Committee

*“Knowledge about our region helps us better plan and prepare”  
- Gail Gosse,  
Chair*



Recent presentation on Community Accounts in Virginia Park

(photo courtesy of Community Services Council)

## MESSAGE FROM THE CHAIR

On behalf of the Northeast Avalon Region Steering Committee I am very pleased to launch our first newsletter. Our committee and regional partners have certainly seen some major developments in our efforts to link both social and economic development over this past year. Most notably, the availability of neighbourhood-level data in Community Accounts has been integral to our planning and priority setting. I encourage everyone to get better informed about our region, its communities and neighbourhoods in whatever capacity you are involved. Knowledge about our region helps us better plan and prepare for the challenges that face us now and in the future.

We are always looking to better communicate our activities and link with a broad range of partners. Hopefully, this electronic newsletter will be one avenue to help us achieve this goal. We welcome feedback, so please share any suggestions you may have about our activities, priorities, or communications in general.

## AREAS OF INTEREST

Based on Community Accounts data and other information provided in both our Early Childhood Development and Poverty reports, numerous “areas of interest” have been identified.

Steering Committee partners will be working with community stakeholders over the coming months to share information, discuss each area’s strengths and needs, and collaborate to improve program and service delivery.

“Our Steering Committee has a facilitative role that involves increasing the sharing of information and collaboration among numerous groups and individuals”, says Gillian Janes, Regional Planner. “We want to build on the strengths of our communities and neighbourhoods to improve outcomes for children and families. We do not want to reinvent the wheel, but rather work collectively to address gaps and avoid duplication.” The rural areas of interest identified are **Bell Island and Marysvale**, while the urban neighbourhoods are **Bell’s Turn, Blackmarsh Road East, Empire Avenue West, Graves Street, Harding Road, and Ricketts Road**.

If you would like to find out more about these areas and our plans, contact Gillian at 722-9845 or [gjan@ssp.nf.net](mailto:gjan@ssp.nf.net).

## NEIGHBOURHOOD DATA AVAILABLE

Over the past three years, the Northeast Avalon Region Steering Committee has been closely involved with the Newfoundland and Labrador Statistics Agency in developing neighbourhood-level data for urban areas of the province. As of this year, neighbourhood data has been made available on the Community Accounts website. This level of data is invaluable for this region where there are large communities with “pockets” that do not reflect the overall prosperity.

Although the site is currently password protected due to licensing with Statistics Canada, many people are able to gain access through their work or volunteer involvement. As well, free training is provided regularly to help users learn how to navigate the site more effectively. To book a training session, email [LindaCranshaw@gov.nl.ca](mailto:LindaCranshaw@gov.nl.ca).